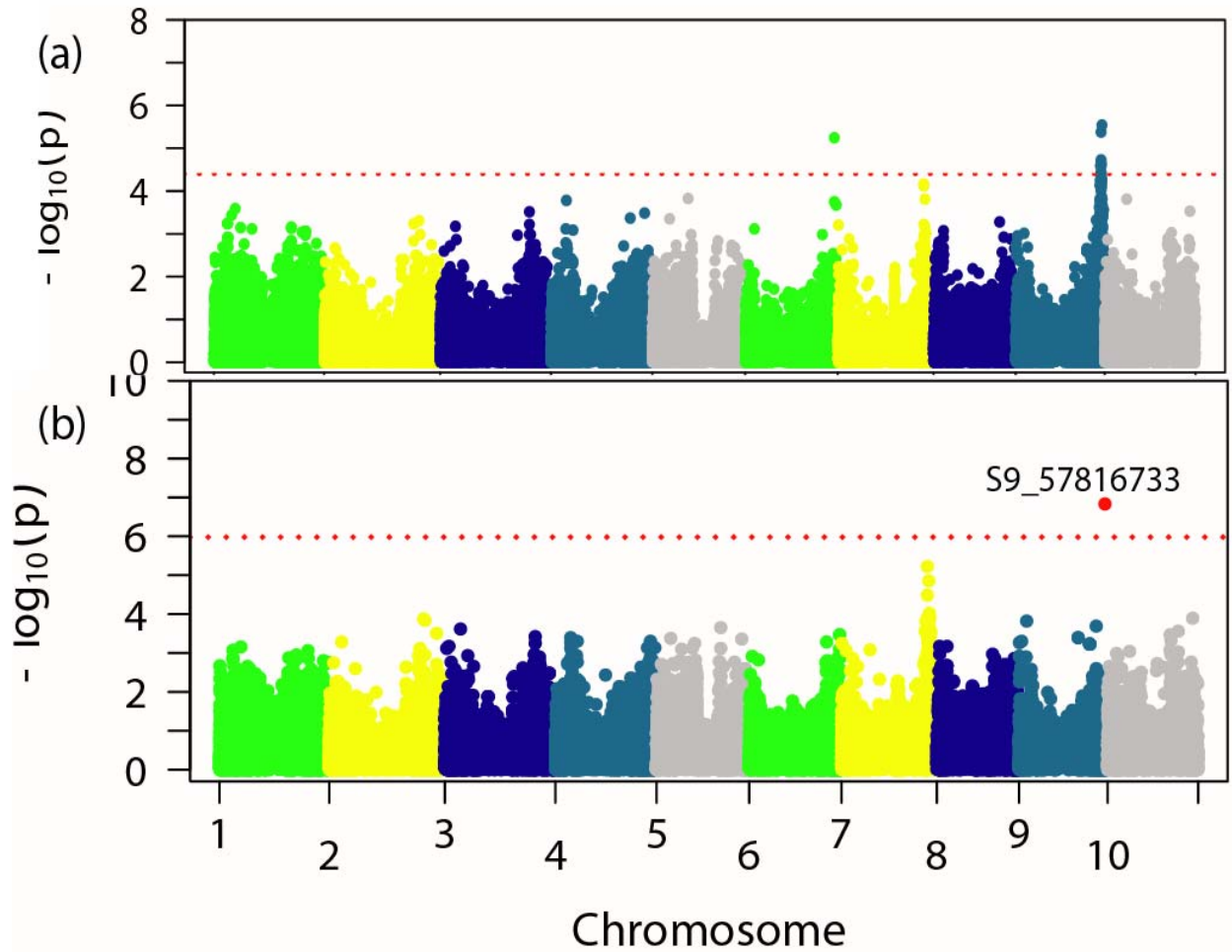


Supplementary Figures (Figure S1-S12)



**Figure S1** Plots of SNPs associated with major lesion length (MLL) for *Fusarium thapsinum* based on the combined analysis. (a) Single-locus mixed model (marked in red; Bonferroni-corrected threshold of 0.05; dashed horizontal line); (b) Multi-locus mixed model (MLMM) identifies one SNP on chromosome 9 (marked in red) from the optimum model. The vertical axis indicates the  $-\log_{10}$  of P-value scores, and the horizontal axis indicates chromosomes and physical positions of SNPs.