

Figure S3

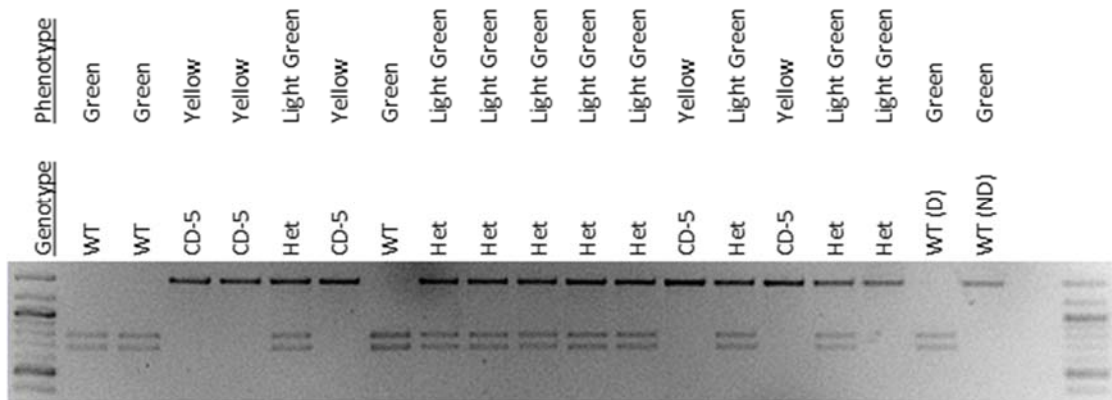


Figure S3 A Cleaved Amplified Polymorphic Sequences (CAPS) assay of seventeen individuals segregating for the presence of the candidate CD-5 SNP. In the rightmost lanes, D indicates a WT/WT digested sample and a ND indicates a WT/WT sample that was not digested. The perfect cosegregation of the candidate CD-5 SNP with the foliage phenotype provides additional information to suggest that the candidate SNP is responsible for the chlorophyll deficient phenotype.