

FIGURE S1

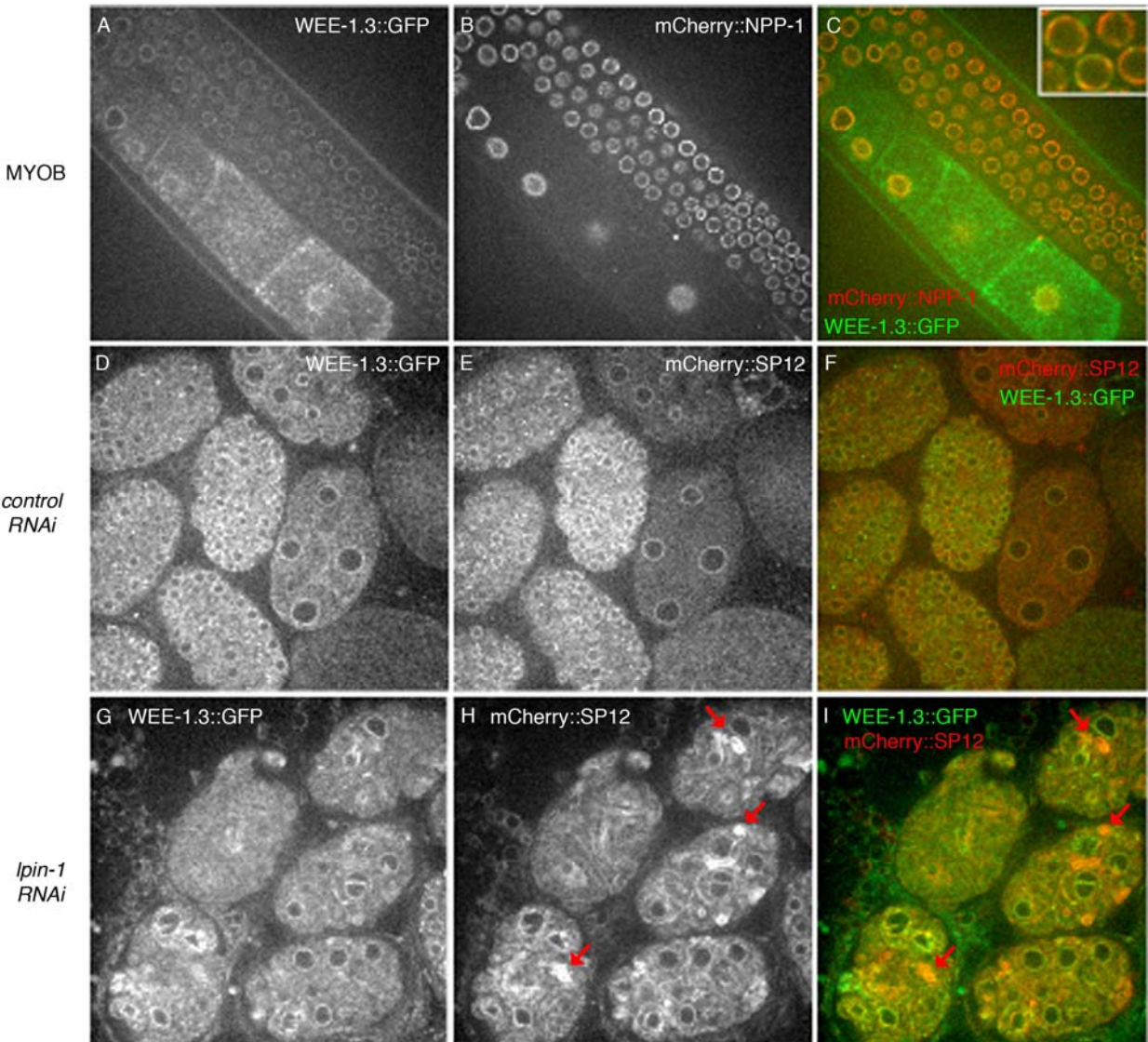


Figure S1 WEE-1.3 is localized to the nuclear envelope and a portion of the endoplasmic reticulum. Single confocal images of live animals expressing WEE-1.3::GFP (green) and mCherry::NPP-1 (red) (A-C) or WEE-1.3::GFP (green) and mCherry::SP12 (red) (D-I). (A-C) Gonad from animal expressing WEE-1.3::GFP and mCherry::NPP-1. Inset in (C) is a blow-up of meiotic nuclei in the more distal germline. (D-I) Embryos from animals expressing WEE-1.3::GFP and mCherry::SP12 subjected to *control* (D-F) or *Ipin-1* (G-I) RNAi. Red arrows in (H) and (I) indicate regions where WEE-1.3::GFP and mCherry::SP12 do not colocalize. Embryos are ~50 μ m in length.