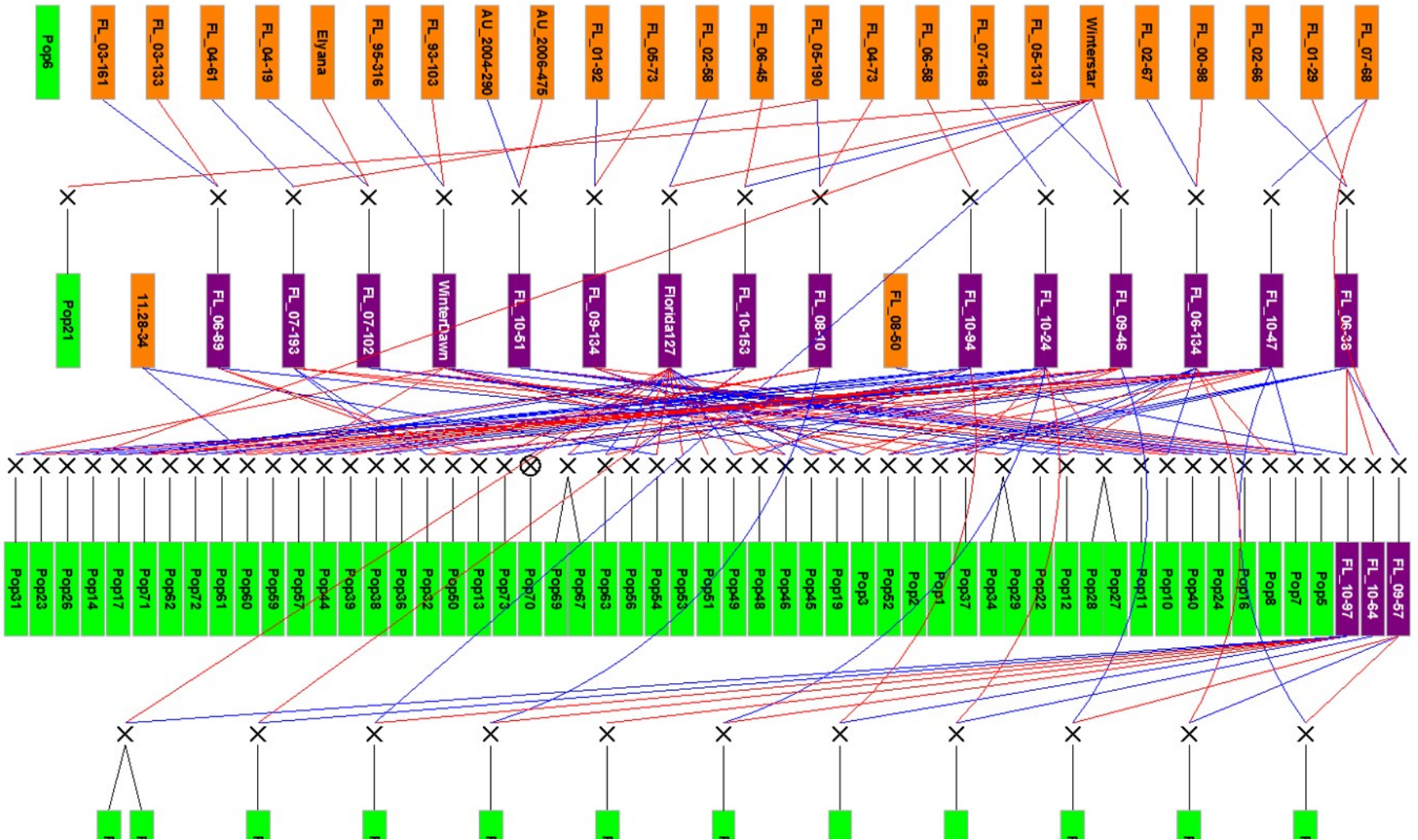


2013-14 discovery population

- Founders
- Intermediate
- F1 population



Supplementary Figure S1 Overview of pedigree connectivity of a multiparental QTL discovery population set in 2013-14. Orange = founders with unknown parentage; purple = intermediate parents and selections; and green = seedling populations phenotyped for resistance to *Phytophthora* crown rot