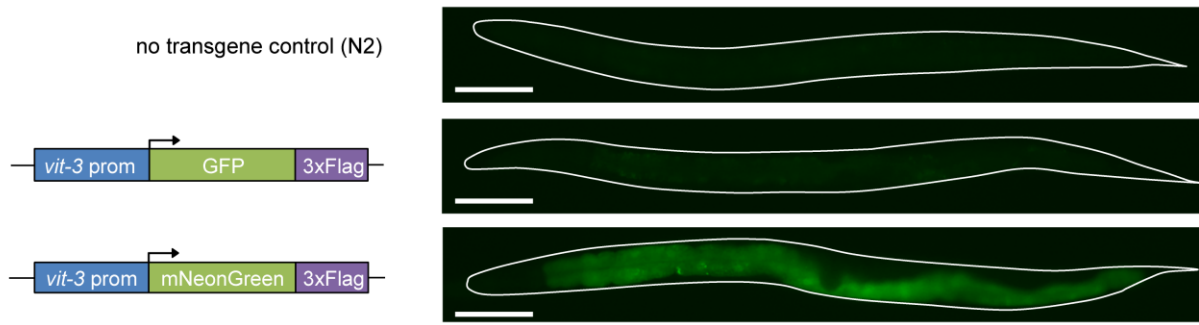
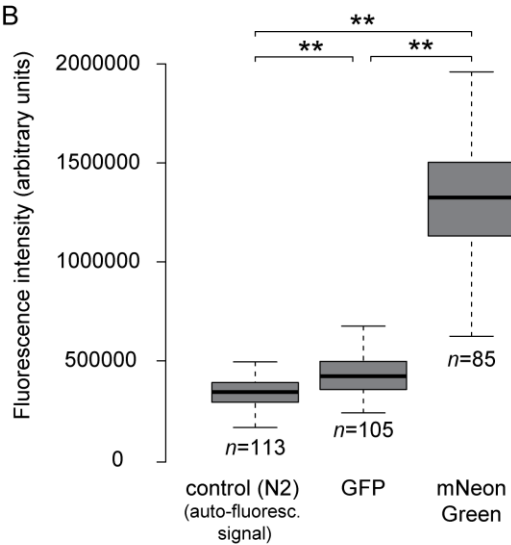


A



B



C

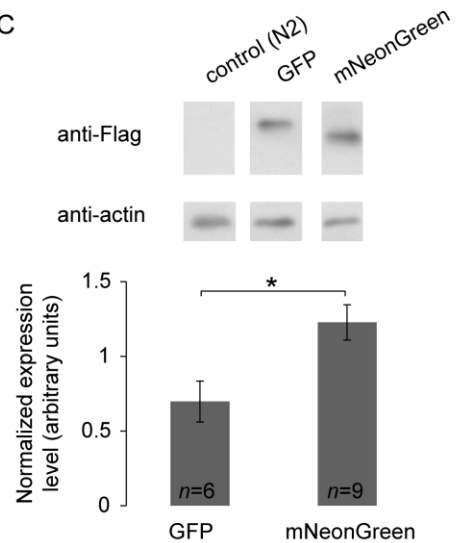


Fig. S3 mNeonGreen is significantly brighter than GFP *in vivo* in the intestine of *C. elegans*. (A)

Schematics of mNeonGreen and GFP constructs and representative confocal projections of *C. elegans* adult animals. Scale bar: 100 μ m. The animal contour was drawn (white line). (B) Fluorescence signal quantification in the intestine. Significant effect of the genotype by one-way ANOVA; **, $p < .001$ by Bonferroni post hoc tests. Animal numbers (n) are indicated. (C) Representative western blot images and quantifications over the indicated number (n) of samples. *, $p < .01$ by Student's t -test. The pictures were taken from the same membrane, with the same exposure conditions.