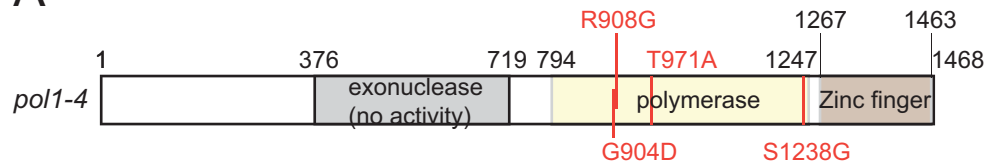
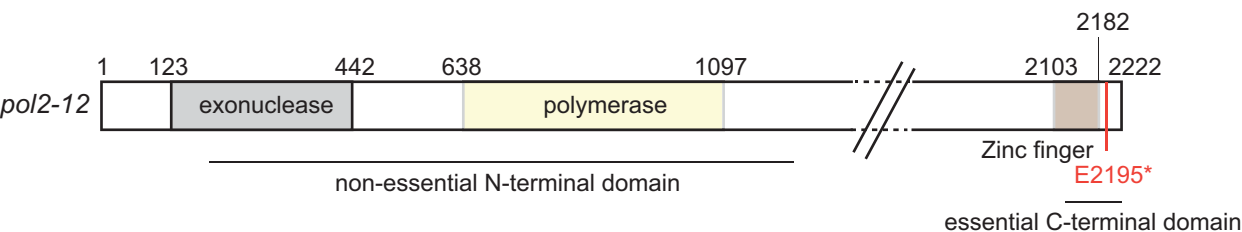


A



B



C

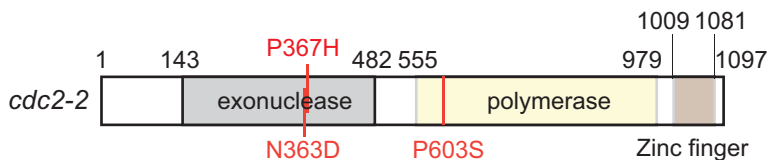


Figure S1: DNA polymerase alleles used in this study

A-C) Representation of the DNA polymerase defective alleles used (BY4741 background). Mutations were identified by sequencing and indicated in **A)** for Pol α , in **B)** for Pol ϵ and in **C)** for Pol δ . Conserved domains of DNA polymerases are shown (exonuclease (grey), polymerase (yellow) and zinc finger (brown)) and mutations are shown in orange. Pol α lacks exonuclease activity because the sequence of catalytic motifs in the Exo domains is destroyed (Pavlov and Shcherbakova 2010).