

Figure S3

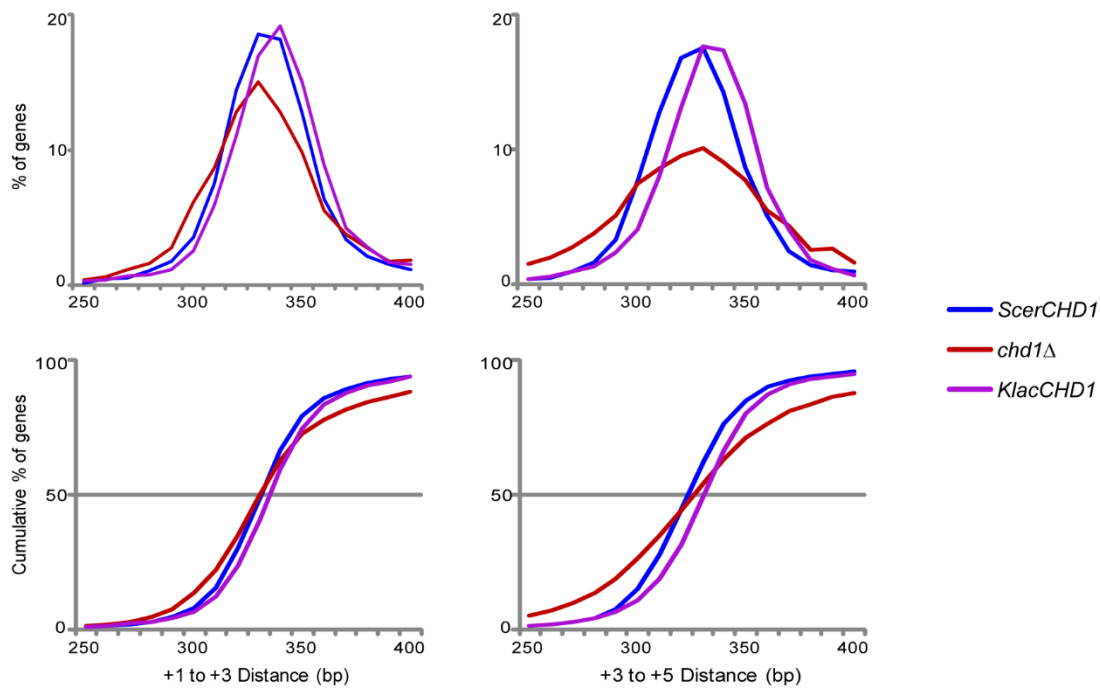


Figure S3 Distribution of nucleosome spacing changes in *CHD1* swap strains. Quantitation of internucleosome distances in the three strains detailed in **Figure 2A**. For each nucleosome mapping dataset, nucleosome positions were called as in (WEINER *et al.* 2010). Left panels show distances from all ORF +1 nucleosomes to the corresponding +3 nucleosome, while right panels show +3 to +5 nucleosome distances. Top panels show the histogram of all such distances for the three strains, color-coded as in (A), while bottom panels show the same data as cumulative distribution plots. A replicate for these integrated strains as well as 2 replicates for plasmid-borne *CHD1* strains are shown in **Supplemental Figure S2**.