

## Identification of new players in cell division, DNA damage response, and morphogenesis through construction of *Schizosaccharomyces pombe* deletion strains

Jun-Song Chen<sup>\*</sup>, Janel R. Beckley<sup>\*</sup>, Nathan A. McDonald<sup>\*</sup>, Liping Ren<sup>\*</sup>, MariaSanta Mangione<sup>\*</sup>, Sylvia J. Jang<sup>\*</sup>, Zachary C. Elmore<sup>\*</sup>, Nicole Rachfall<sup>\*</sup>, Anna Feoktistova<sup>\*</sup>, Christine M. Jones, Alaina H. Willet<sup>\*</sup>, Rodrigo Guillen<sup>\*</sup>, Danny A. Bitton<sup>§</sup>, Jürg Bähler<sup>§</sup>, Michael A. Jensen<sup>¶</sup>, Nick Rhind<sup>‡</sup>, and Kathleen L. Gould<sup>\*</sup>

<sup>\*</sup>Department of Cell and Developmental Biology, Vanderbilt University School of Medicine, Nashville, TN 37232, USA;

<sup>§</sup>Department of Genetics, Evolution and Environment and UCL Cancer Institute, University College London, London WC1E 6BT, UK; <sup>¶</sup>Genome technology Center, Stanford University School of Medicine, Palo Alto, CA 01605, USA;

<sup>‡</sup>Department of Biochemistry and Molecular Pharmacology, University of Massachusetts Medical School, Worcester, MA 01605, USA

Corresponding author:

Kathleen L. Gould

Department of Cell and Developmental Biology

Vanderbilt University School of Medicine

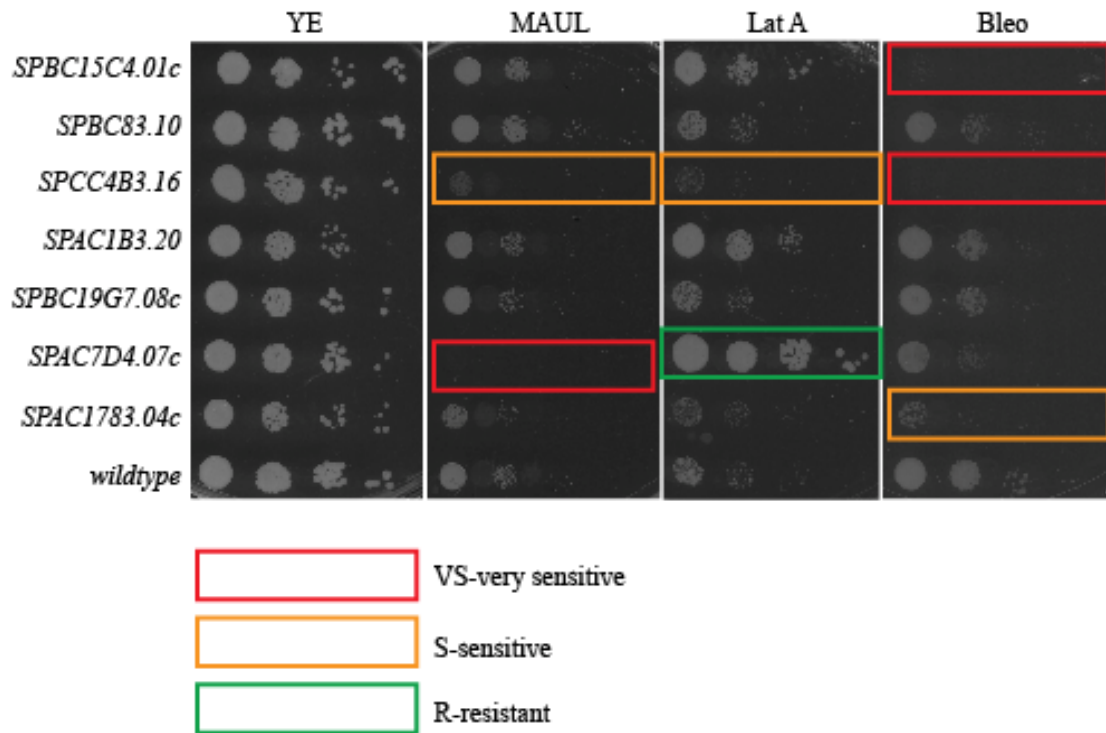
Nashville, TN 37232

USA

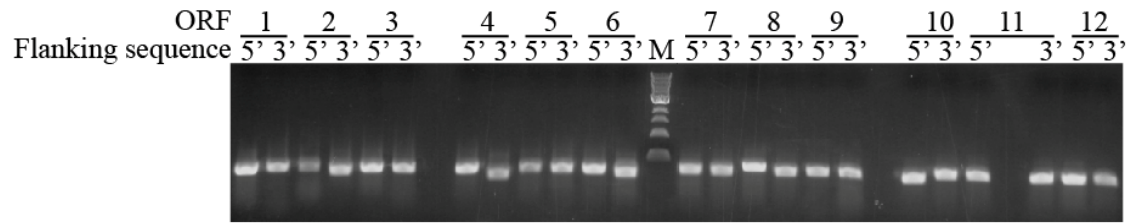
615-343-9502

[kathy.gould@vanderbilt.edu](mailto:kathy.gould@vanderbilt.edu)

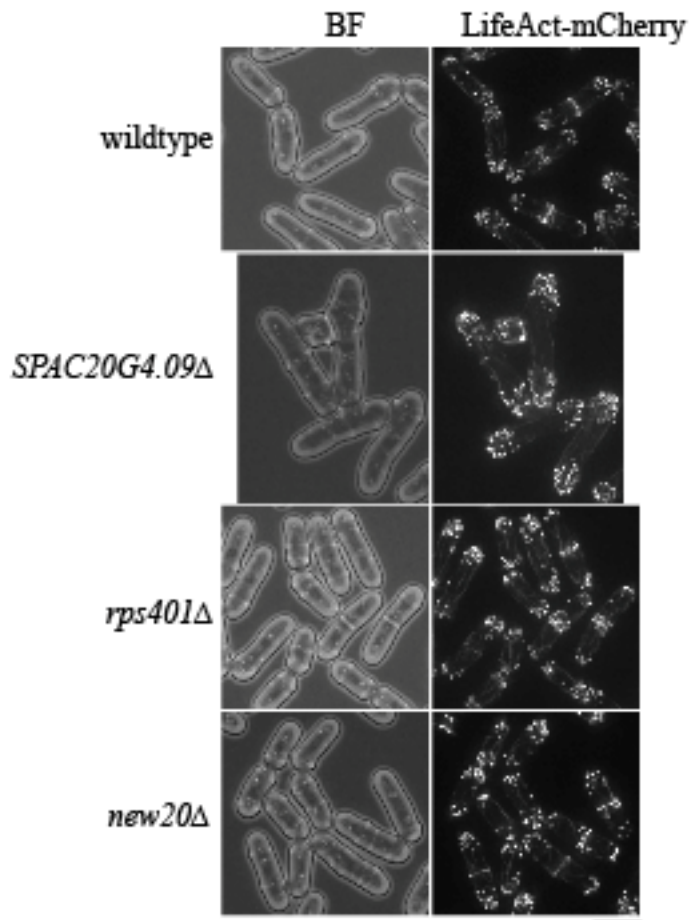
DOI: 10.1534/g3.114.015701



**Figure S1** Examples of growth assay sensitivities. An example set of strains tested for growth at 29°C on YE, minimal medium (MAUL), YE+LatA, and YE+bleomycin (Bleo) with 10-fold serial dilutions. Representative scoring of growth as very sensitive (VS), sensitive (S), and resistant (R) is indicated with colored boxes.



**Figure S2** Examples of PCR amplification products from the first round of PCR reactions. 5  $\mu$ L of each first round PCR reaction was loaded on 0.8% agarose gel for visualization. M, 1 kb DNA ladder (the bottom band is 500 bp).



**Figure S3 F-actin staining of LatA sensitive strains.** The distribution of F-actin was detected in the indicated strains using an integrated version of LifeAct-mCherry. Representative live cell images are shown. BF, bright field; Scale bar, 5  $\mu\text{m}$ .

**Tables S1-S7**

Available for download as Excel files at <http://www.g3journal.org/lookup/suppl/doi:10.1534/g3.114.015701/-/DC1>

**Table S1**

**Table S2** Sequences of common oligos

**Table S3** Summary of sensitivities of the deletions to different stress conditions

**Table S4** Sensitive to  $\geq 3$  conditions

**Table S5** Deletions which are sensitive to drugs interfering with DNA metabolism

**Table S6** Deletions which are sensitive to actin disrupting agent latrunculin A

**Table S7** Sensitive to high temperature only or plus one additional sensitivity