

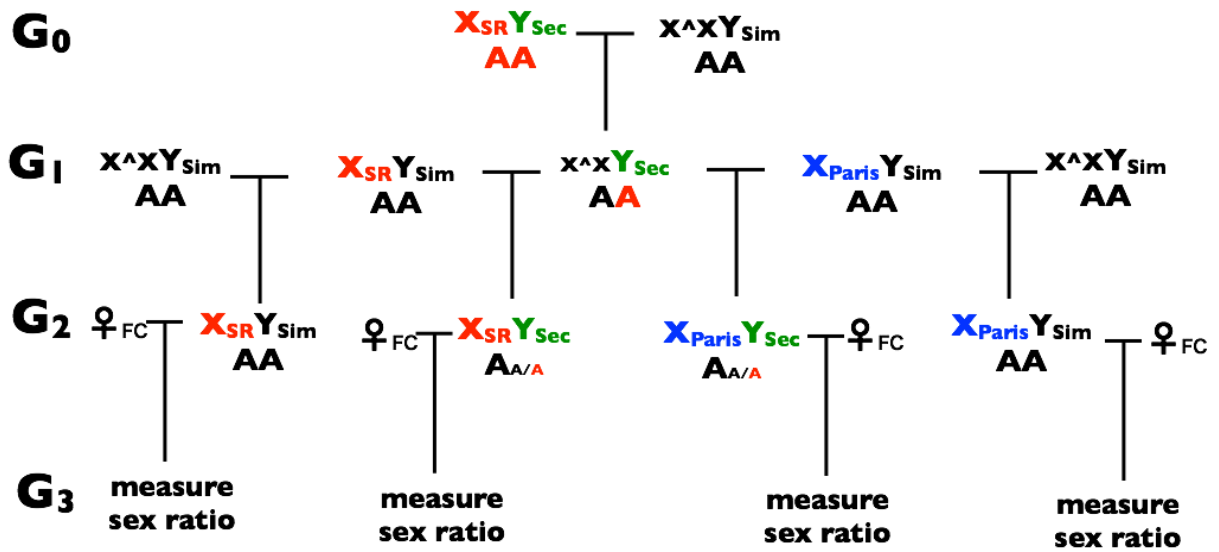
**An X-linked sex ratio distorter in *Drosophila simulans* that kills or incapacitates both non-carrier sperm and sons**

William R. Rice<sup>\*,1</sup>

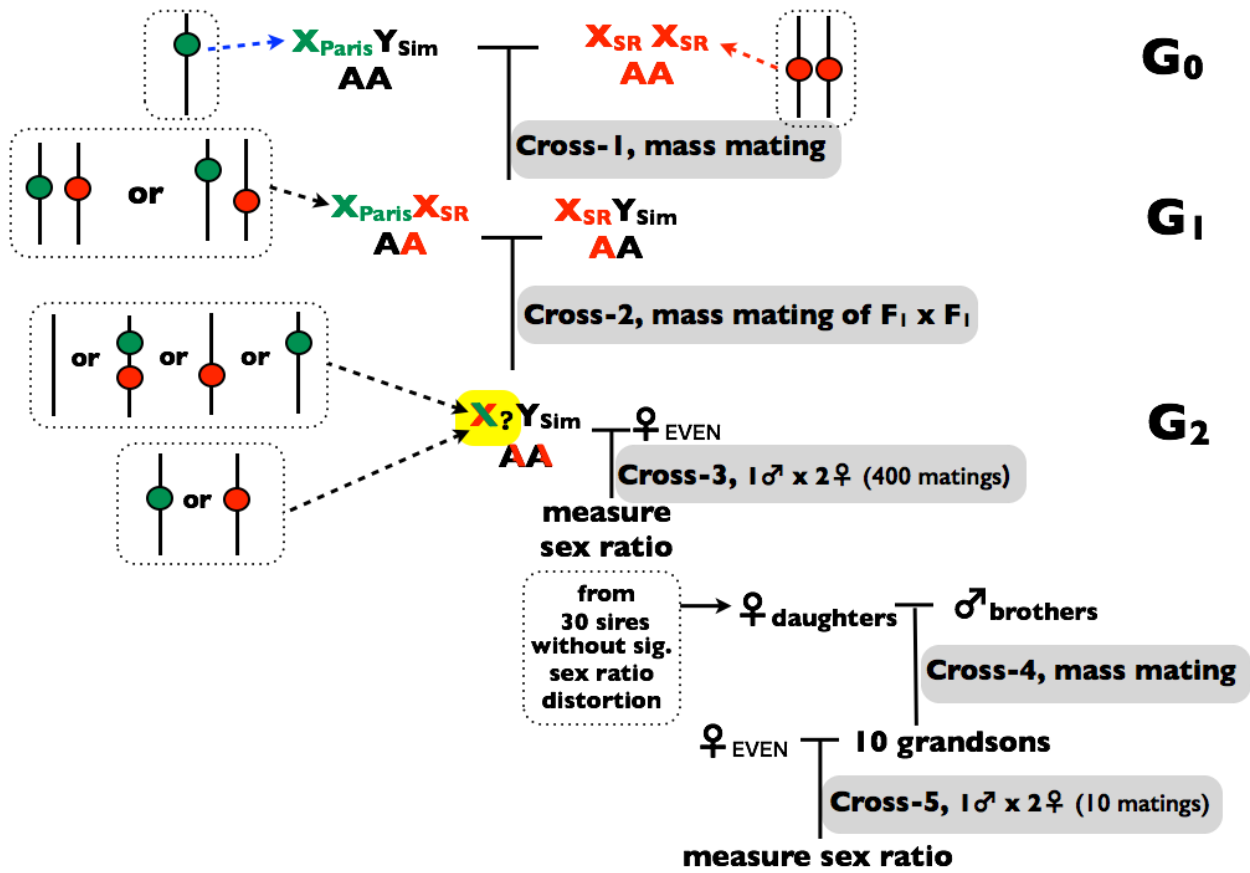
\*Department of Ecology, Evolution & Marine Biology, University of California, Santa Barbara, CA, 93106 USA

<sup>1</sup> **Correspondence:** Department of Ecology, Evolution and Marine Biology, The University of California Santa Barbara, CA 93111, USA. E-mail: [rice@lifesci.ucsb.edu](mailto:rice@lifesci.ucsb.edu).

**DOI: 10.1534/g3.114.013292**



**Figure S1** Crosses done to examine the influence of a Y chromosome from *D. sechellia* ( $Y_{sec}$ ) on the expression of the SR and Paris sex ratio drivers. The symbol A denotes autosomes, X an X chromosome,  $Y_{sim}$  a Y chromosome from *D. simulans* and  $X^A X$  a compound X chromosome. Black symbols denote chromosomes from the compound-X line and Red symbols from the SR line.



**Figure S2** Crosses done to test for recombination between the Paris (green circles) and SR (red circles) sex ratio drivers.