

Figure S1. A

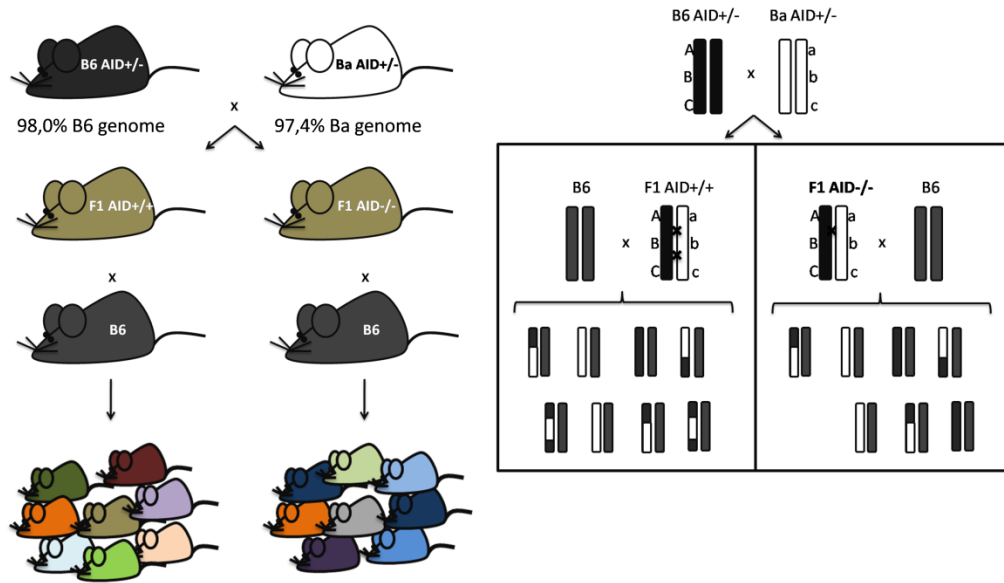
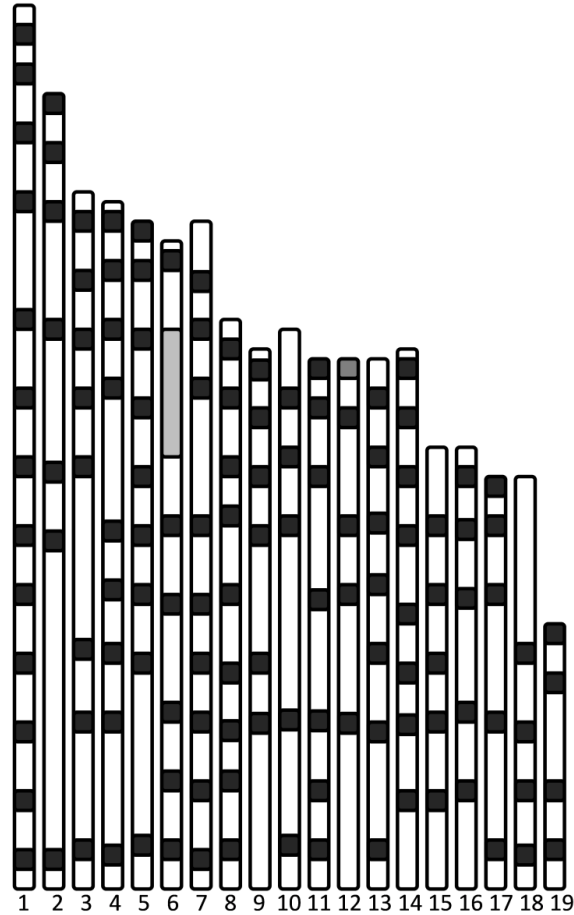


Figure S1. B



**Figure S1 (A)** Schematics of the mating strategy : matings of B6.Aicda<sup>+/-</sup> and BA.Aicda<sup>+/-</sup>; F1 were genotyped for *Aicda* locus. F1.Aicda<sup>-/-</sup> and F1.Aicda<sup>+/+</sup> were reciprocally mated with C57BL/6J and offspring was genotyped for SNPs that distinguish C57BL/6J from BALB/c genetic background. **(B)** Schematics of the SNP relative positions on the 19 autosomes in black. In Chromosome 6, the light grey area represents the portion that contains the *Aicda* locus and that is still of 129 genome. In medium grey is represented the relative position of the Variable Number Tandem Repeat (VNTR) in chromosome 12.