

B

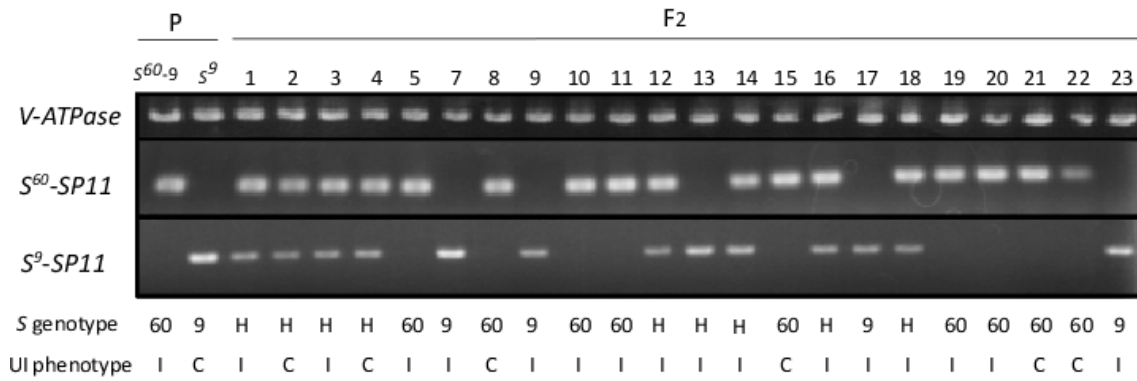


Figure S1 Segregation analysis of SF₂-60.

(A) Crossing scheme used to develop the SF₂-60 segregation line. (B) Genomic DNA isolated from parental (P) plants homozygous for either the S^{60-9} or S^9 , and SF₂-60 progeny plants (F₂) and their *SP11* were amplified using their *S*-genotype specific primer. The SUI phenotype of the stigma of each plant to $S^{40}t$ pollen was determined by pollination tests. The *S* genotype and UI phenotype are shown below each lane: 60, S^{60} -homozygote; 9, S^9 -homozygote; H, S^{60}/S^9 -heterozygote; C, compatible to $S^{40}t$ pollen (non-UI); I, incompatible to $S^{40}t$ (UI). *V-ATPase* gene was amplified as a positive control.