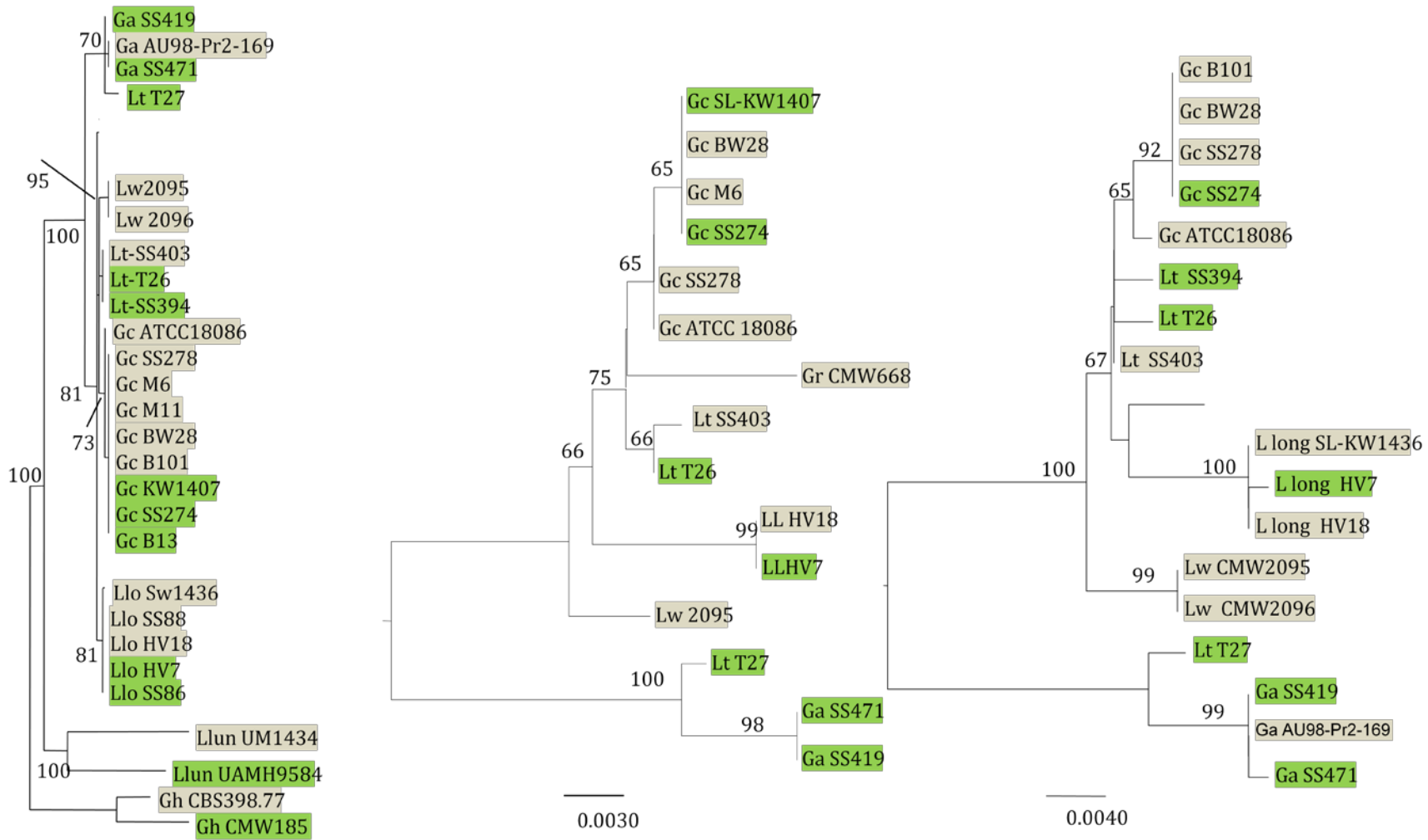


(a) SLA**(b) APN****(c) COX13**

— 5 changes

Figure S5 Gene genealogies of the nucleotide sequences of (A) *SLA* (898 characters, a maximum parsimony tree), (B) *COX13* (788 characters, a neighbor-joining tree), and (C) *APN* (1444 characters, neighbor-joining tree) genes demonstrating the phylogenetic relationships among *G. clavigera* and related species. *MAT1-2* isolates are indicated in green while *MAT1-1* isolates are highlighted in grey.