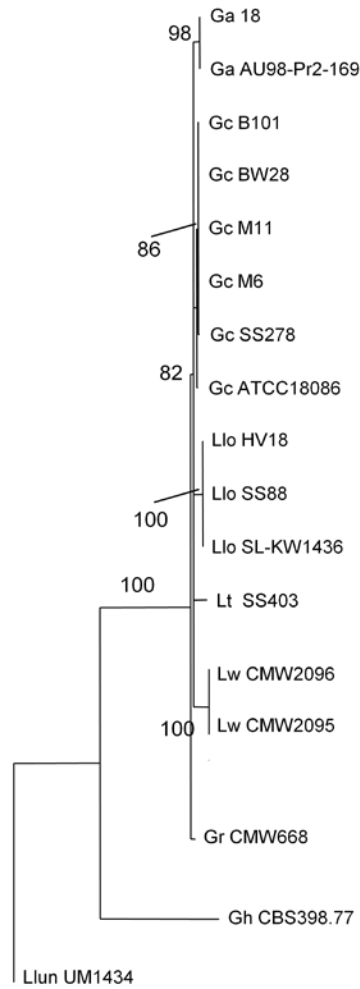
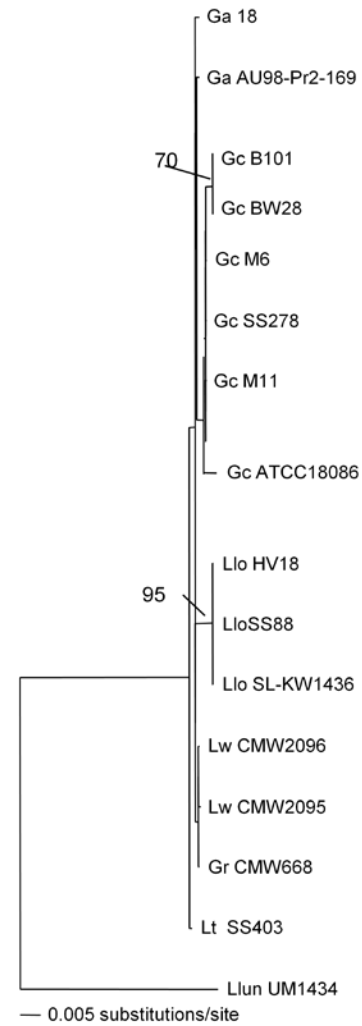


(a) *MAT1-1-2*



- 5 changes

(b) *MAT1-1-3*



— 0.005 substitutions/site

(c) *MAT1-2-1*

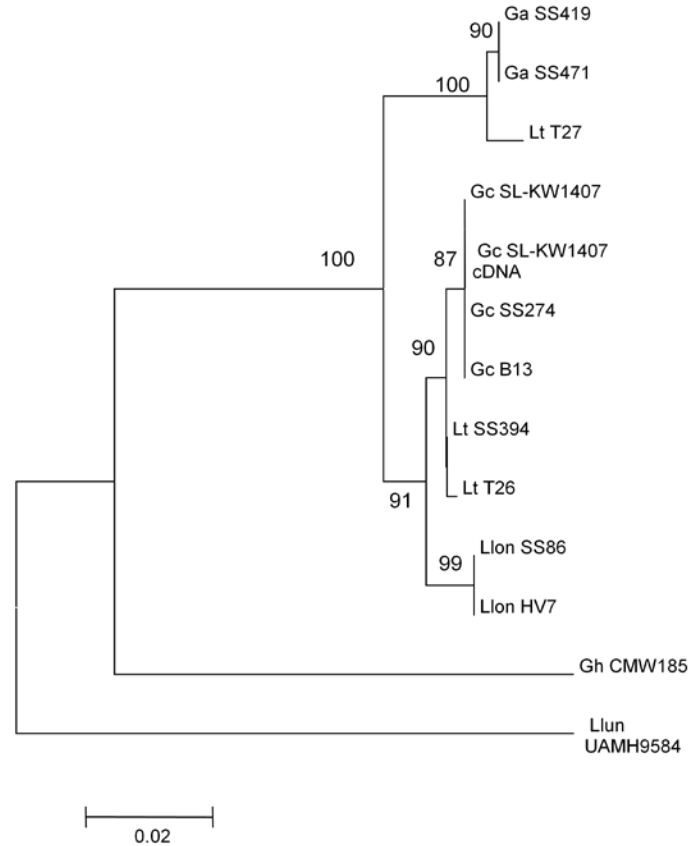


Figure S4 Gene genealogies of the *MAT1-1-2* (1045 characters a maximum parsimony tree), *MAT1-1-3* (574 characters, a neighbor-joining tree), and *MAT1-2-1* (858 characters, a neighbor-joining tree) demonstrating the phylogenetic relationships among *G. clavigera* and related species.