

***C. elegans* POT-1 and POT-2 repress telomere maintenance pathways**

Ludmila Shtessel^{*,§}, Mia Rochelle Lowden^{***}, Chen Cheng^{*,§§}, Matt Simon^{*,§}, Kyle Wang^{*} and Shawn Ahmed^{*,§,**}

^{*}Department of Genetics, [§]Curriculum in Genetics and Molecular Biology, ^{**}Department of Biology, University of North Carolina, Chapel Hill, NC 27599-3280, USA

^{§§}Current Address: Department of Chemistry, University of California, Berkeley, CA 94720, USA

DOI: 10.1534/g3.112.004440

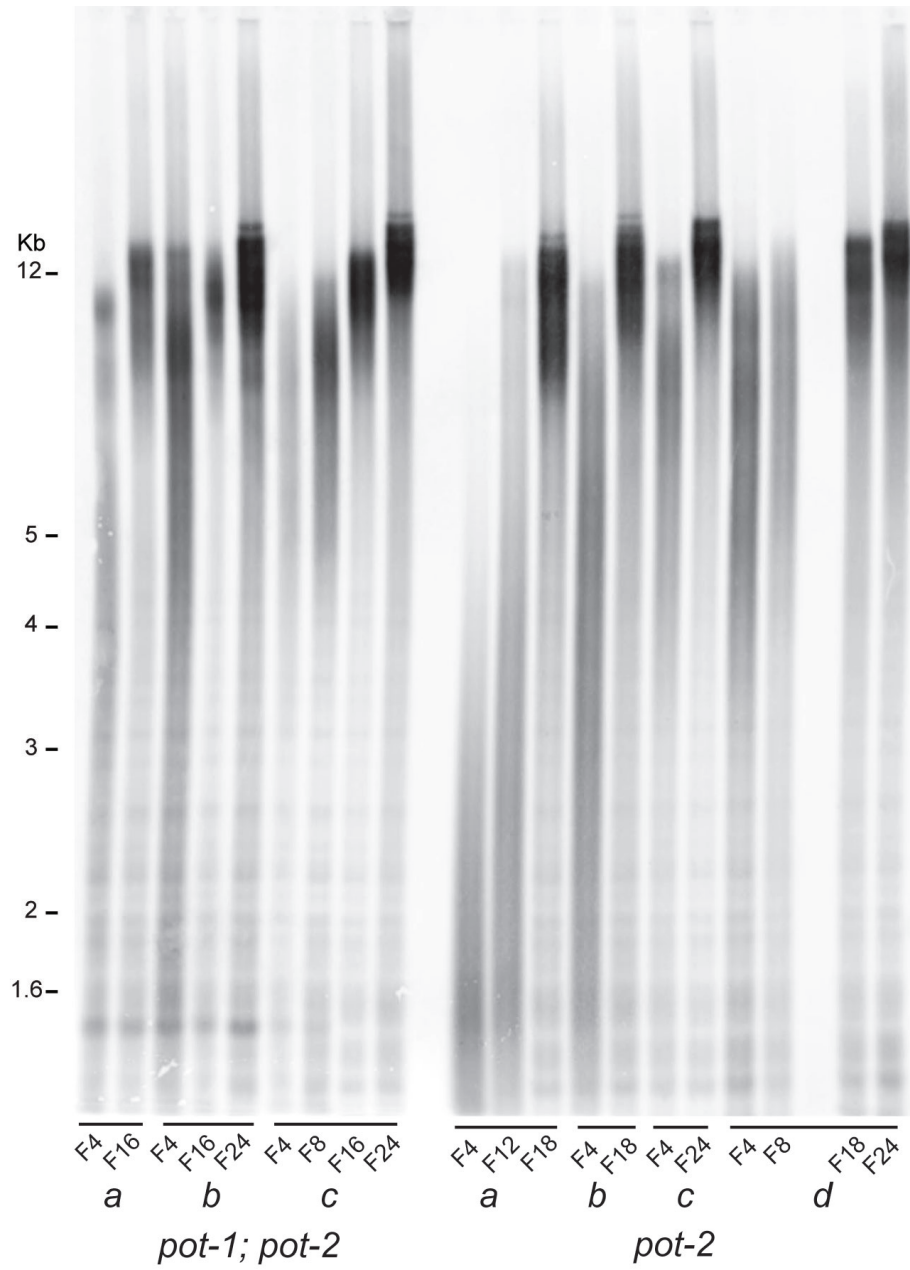


Figure S1. Southern blotting of independent lines of *pot-1; pot-2* and *pot-2* mutants reveals qualitatively similar telomere elongation dynamics.

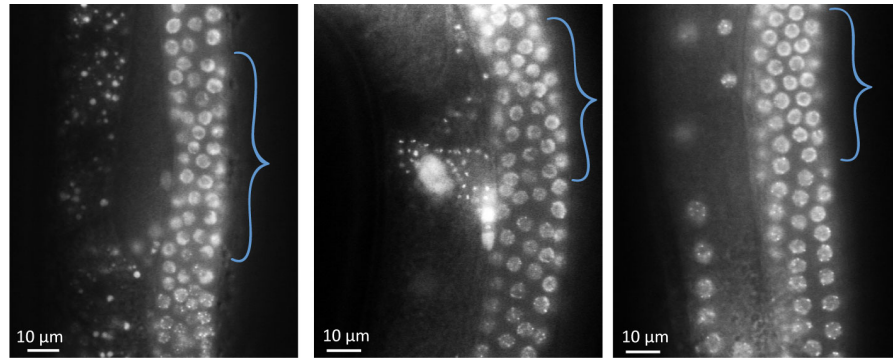


Figure S2. POT-1::mCherry localization in transition zone germline nuclei. POT-1::mCherry fluorescence is more diffuse in transition zone nuclei (brackets), where chromosomes begin to pair and enter meiosis.