

3. Ribosomal DNA

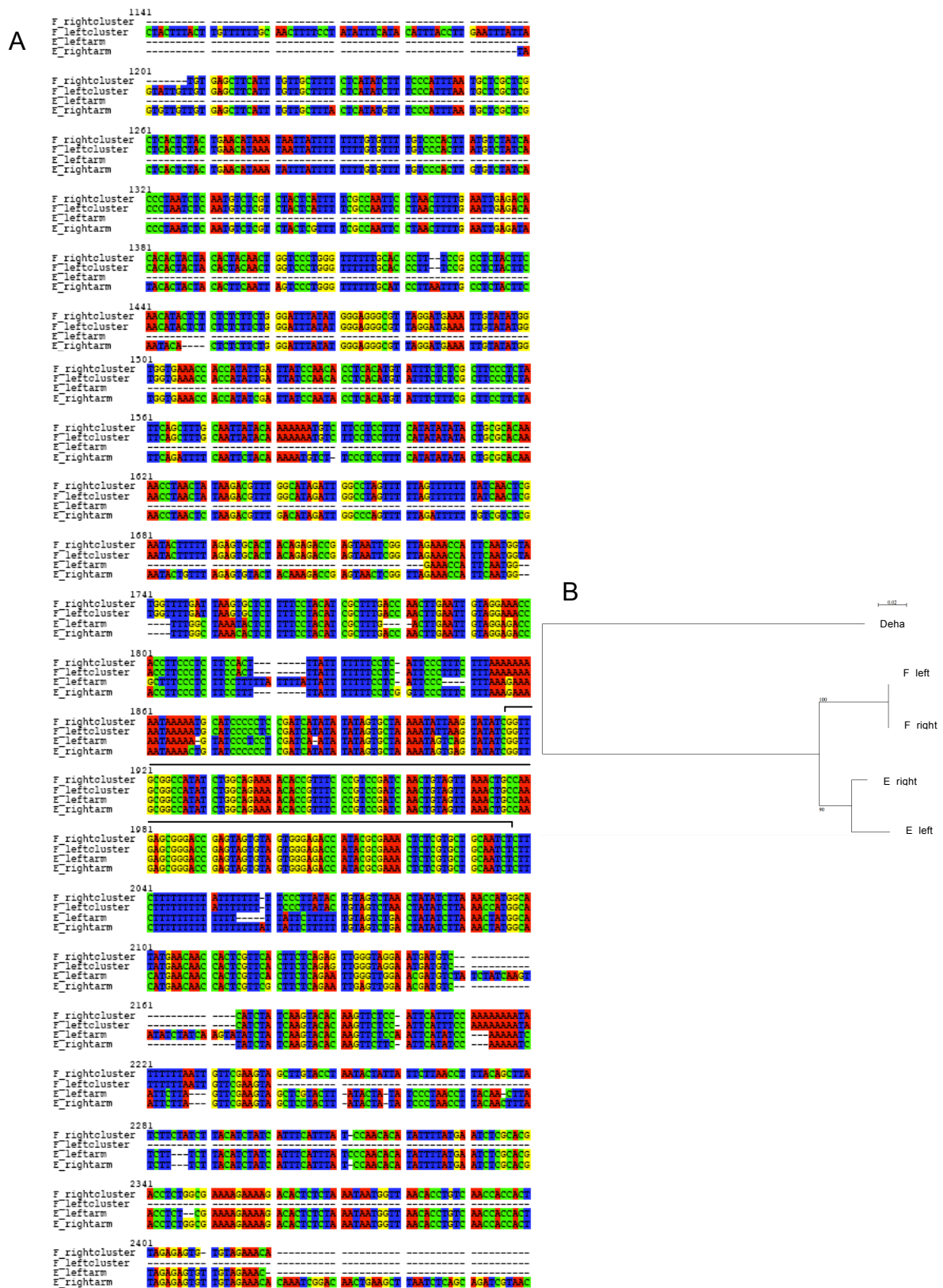


Figure S10 Comparison of 5S rDNA sequences. (A) Multiple alignment of the rDNA loci performed with Muscle software (Edgard, 2004) and visualized with Jalview (Waterhouse *et al.*, 2009). E_leftarm and E_rightarm correspond to both rDNA loci on chr. E, F_leftcluster and F_rightcluster correspond to the 5S sequences flanking the 73 tandem repeats (Fig. 4). (B)

Phylogenetic tree calculated using the Bio-NJ distance method in Seaview (Gouy *et al.*, 2010) for 100 replicata and *D. hansenii* as outgroup.