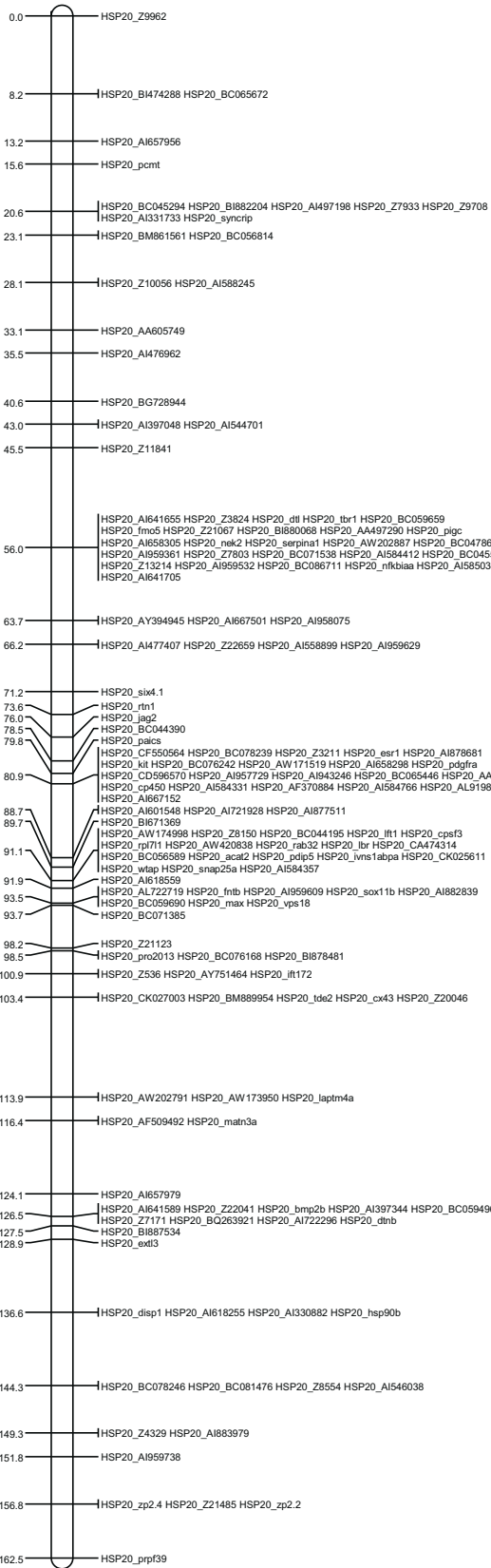


DreLG20

157 EST markers



DreLG20

311 RAD markers

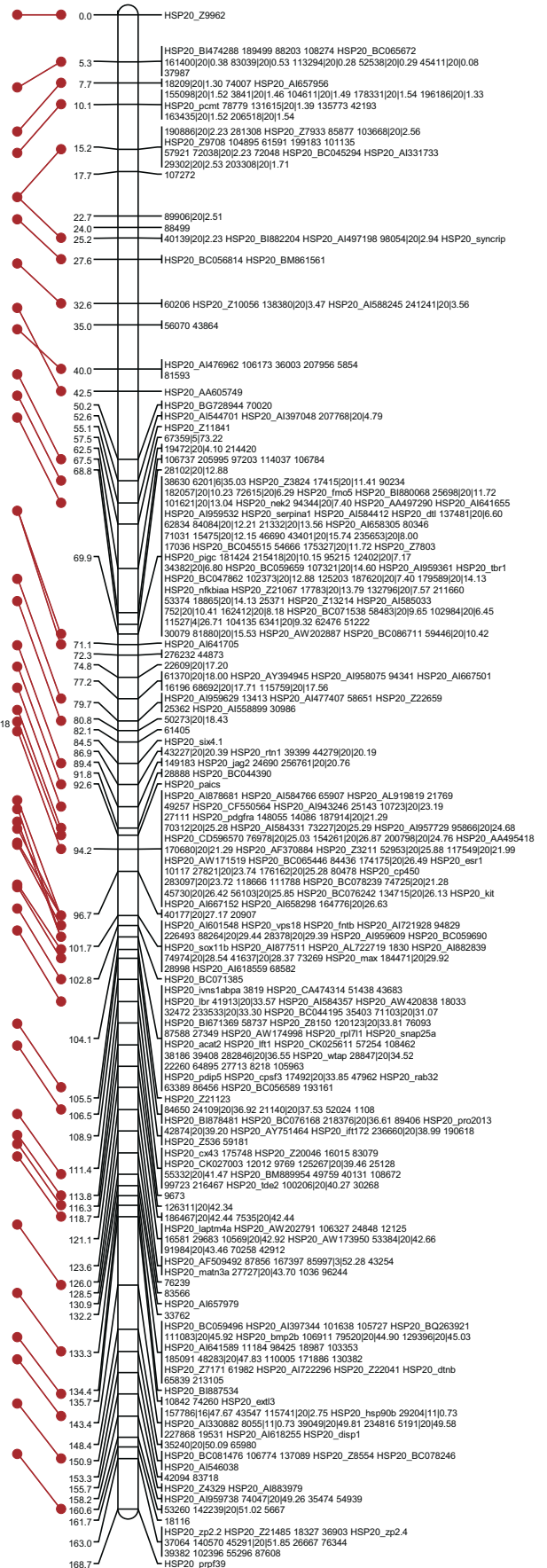


Figure S3 HSmap versus RADmap. We reconstructed the HSmap from its original set of markers and combined the HSmap markers with the new, RAD-seq markers and built a second map. LG20, shown here, and all other linkage groups, shows very close agreement between markers in both maps, as indicated by red lines that connect identical markers in the two maps.