

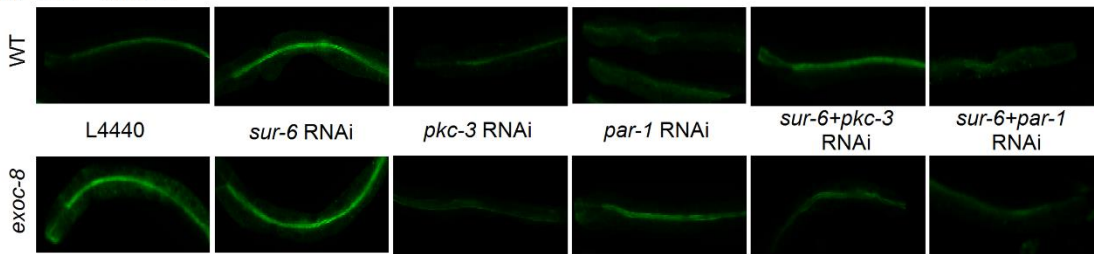
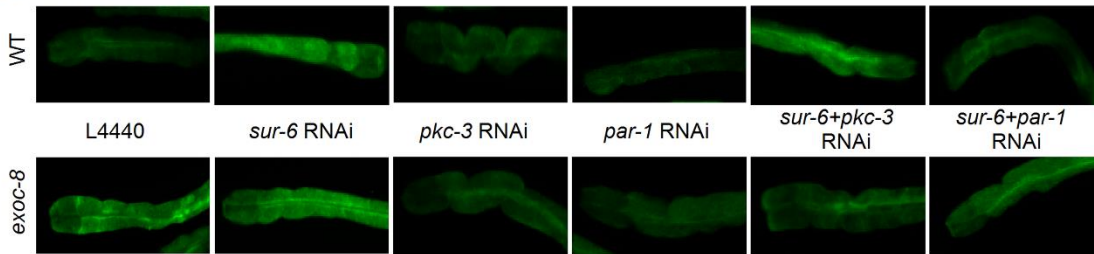
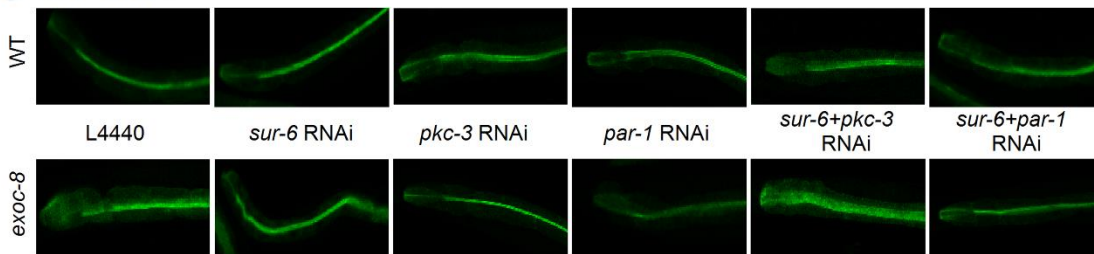
A GFP-SNB-1**B GFP-SNAP-29****C GFP-SYX-4**

Figure S6 Representative figures of the genetic interactions observed between *par-1*, *pkc-3* *sur-6* RNAi for the localization of late secretory pathway markers. (A) Localization of GFP-SNB-1 fluorescence in WT and *exoc-8* mutant animals treated with L4440, *sur-6*(RNAi), *pkc-3*(RNAi), *par-1*(RNAi), *sur-6*(RNAi);*pkc-3*(RNAi), *sur-6*(RNAi);*par-1*(RNAi). (B) Localization of GFP-SNAP-29 fluorescence in WT and *exoc-8* mutant animals treated with L4440, *sur-6*(RNAi), *pkc-3*(RNAi), *par-1*(RNAi), *sur-6*(RNAi);*pkc-3*(RNAi), *sur-6*(RNAi);*par-1*(RNAi). (C) Localization of GFP-SYX-4 fluorescence in WT and *exoc-8* mutant animals treated with L4440, *sur-6*(RNAi), *pkc-3*(RNAi), *par-1*(RNAi), *sur-6*(RNAi);*pkc-3*(RNAi), *sur-6*(RNAi);*par-1*(RNAi).