

a

```
A1 GTTGTNNNNNNNNNNNNNNNNNNNNNNNNNNNNNNNNNNNNNNNNNNNNNNAGCAAGATGATCGAATTTG
A2 GTTGTNNNNNNNNNNNNNNNNNNNNNNNNNNNNNNNNNNNNNNNNNNNNNGCAAGCAAGATGATCGAATTTG
A3 GTTGTTTAGGTGTAGAGGGGGGGGGGGGGGGGGTGTGGTTGCAAGCAAGATGATCGAATTTG
A4 GTTGTTTAGGTGTAGAGGGGGGGGGGGGGGGGGTGTGGTTGCAAGCAAGATGATCGAATTTG
A5 GTTGTTTAGGTNNNNNNNNNNNNNNNNNNNNNNNNNNNNNNNNNNNNNNNNNGCAAGATGATCGAATTTG
A6 GTTGTTTAGGTGTAGAGGGGGGGGGGGGGGGGGTGTGGTTGCAAGCAAGATGATCGAATTTG
A7 GTTGTTTANNNNNNNNNNNNNNNNNNNNNNNNNNNNNNNNNNNNNNNNNNGCAAGCAAGATGATCGAATTTG
AB8 GNNNNNNNNNNNNNNNNNNNNNNNNNNNNNNNNNNNNNNNNNNNNNGCAAGCAAGATGATCGAATTTG
B1 GTTGNNNNNNNNNNNNNNNNNNNNNNNNNNNNNNNNNNNNNNNNNNNGCAAGCAAGATGATCGAATTTG
B2 GTTGTTTAGGTGTAGAGGGGGGGGGGGGGGGGGTGTGGTTGCAAGCAAGATGATCGAATTTG
B3 GKTGTTTAGGTGTAGAGGGGGGGGGGGGGGGGGTGTGGTTGCAAGCAAGATGATCGAATTTG
B4 GTTGNNNNNNNNNNNNNNNNNNNNNNNNNNNNNNNNNNNNNNNNNGCAAGATGATCGAATTTG
B5 GTTGTTTAGGTGTAGAGGGGGGGGGGGGGGGGGTGTGGTTGCAAGCAAGATGATCGAATTTG
B6 GNNNNNNNNNNNNNNNNNNNNNNNNNNNNNNNNNNNNNNNNNGGGTGTGGTTGCAAGCAAGATGATCGAATTTG
B7 GTTGTTTAGGTGTAGAGGGGGGGGGGGGGGGGGTGTGGTTGCAAGCAAGATGATCGAATTTG
```

b

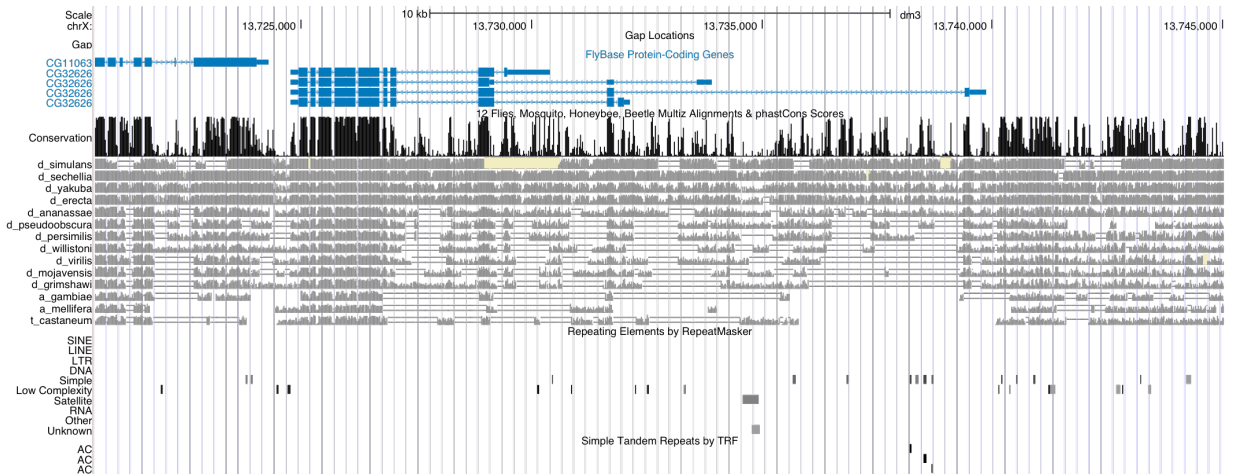


Figure S5 a) Alignment of INDEL polymorphism immediately downstream of exon 1 of CG32626 (the candidate gene for QTL A). The region depicted is the reverse complement of X:13739300-13739360, we reverse complement so the DNA sequence is in the same orientation as transcription. **b)** Santa Cruz Genome Browser screen shot of CG32626 showing four putative alternate first exons.