

C

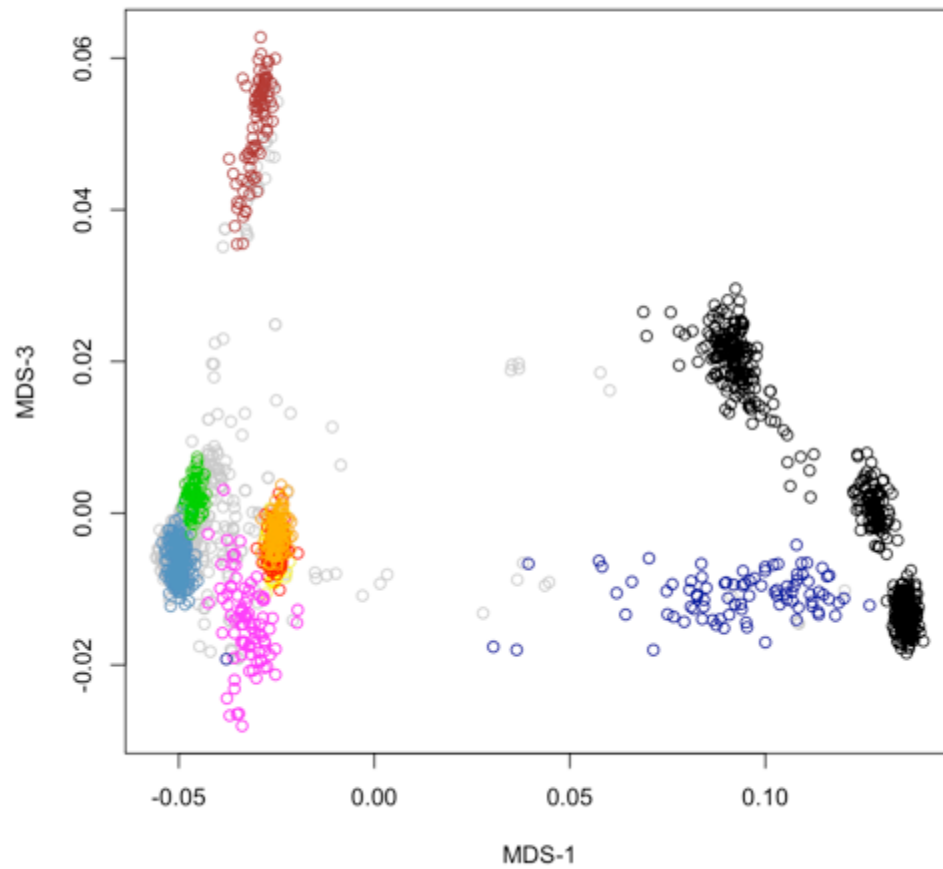


Figure S3 Results from ancestry analysis using SNP genotype data. (A) The figure shows the dimensions 1 and 2 of the multidimensional scaling. (B) A zoomed view of the known and putative European group of the dimensions 1 and 2 (C) Plot of dimensions 1 and 3 of the multidimensional scaling.

ASD samples are colored as gray and HapMap3 samples are colored in different colors.

Utah residents with ancestry from northern and western Europe (CEU) – light blue; Tuscany in Italy (TSI) – green; Japanese in Tokyo (JPT) – red; Han Chinese in Beijing (CHB) – yellow; Yoruba in Nigeria (YRI), Masai in Kenya (MKK), Luhya in Kenya (LWK)-black; African ancestry in Southwest USA (ASW)-dark blue; Gujarati Indians in Houston (GIH) – brown; Mexicans (MEX)- magenta